

Workshop:

“ A stage for shaping the next generation of genome-wide association studies (GWAS). “

GWAS mega-analysis for complex diseases

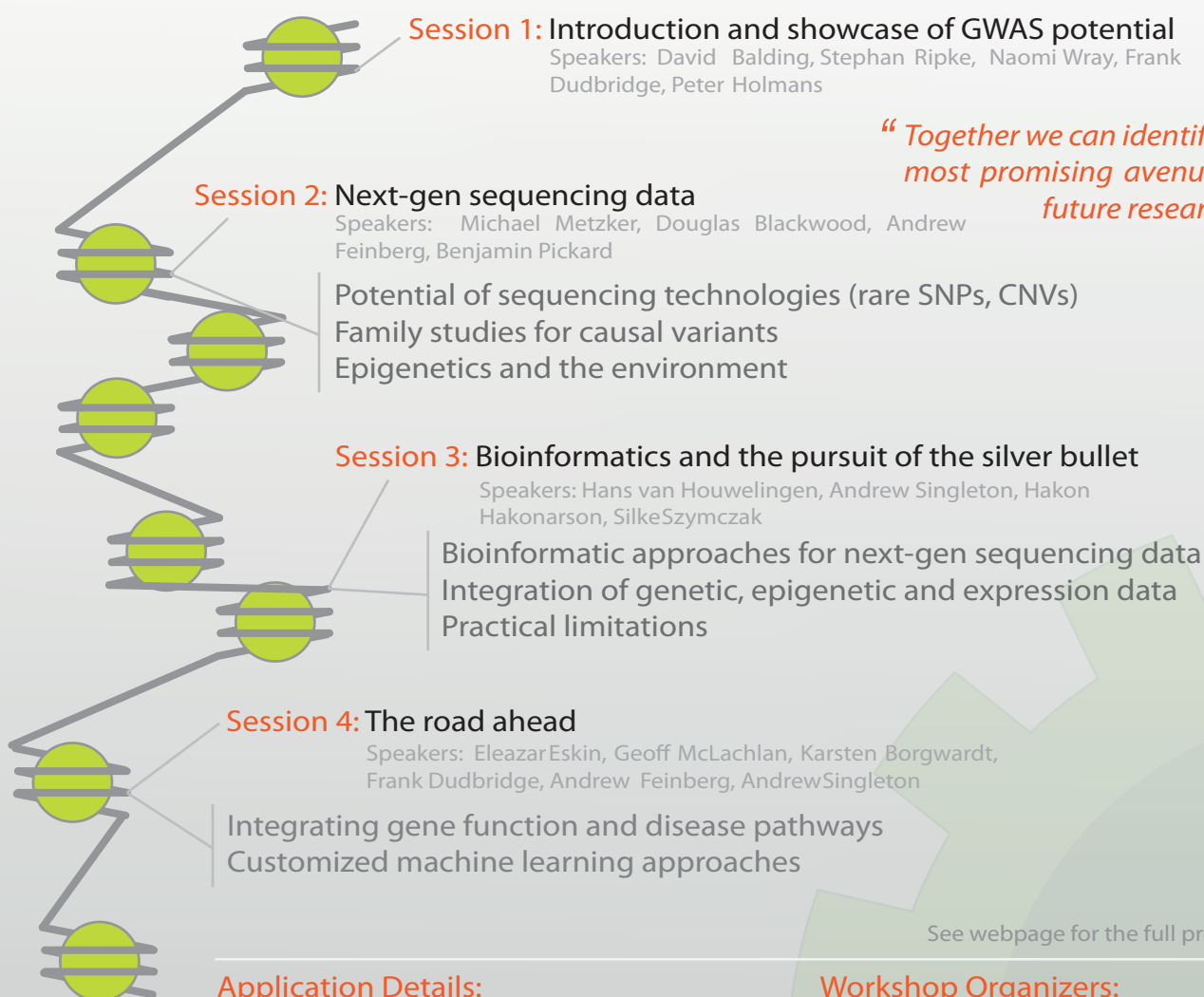
Part of the International Conference on
Systems Biology (ICSB2010)

The workshop is aimed at statistical geneticists looking for improved tools for GWAS as well as researchers in machine learning and statistics with an interest in complex diseases, such as schizophrenia.

15. October 2010
Edinburgh, Scotland, UK

<http://www.icsb2010.org.uk/workshops/>

Program Highlights



“ Together we can identify the most promising avenues of future research. “

See webpage for the full program

Application Details:

Full day workshop on the 15.10.2010
Registration via webpage

Workshop Organizers:

Professor Bryan J. Mowry and
Dr. Denis C. Bauer, Dr. Jake Gratten
The University of Queensland,
Australia.